

A scenic landscape of the Ogden River watershed. The foreground shows a calm river reflecting the surrounding environment. The middle ground is filled with lush green and yellow trees along the riverbank. In the background, there are large, rugged mountains with patches of autumn-colored foliage in shades of red, orange, and brown. The sky is a clear, bright blue.

Ogden River Watershed Plan

Community Update



UTAH DEPARTMENT *of*
ENVIRONMENTAL QUALITY
**WATER
QUALITY**

Table of Contents

01 Watershed Plan

02 Pollution Sources

03 Implementation

04 Community
Engagement

05 Summary

06 Feedback

Watershed Plan

Ogden
River
Watershed
Plan

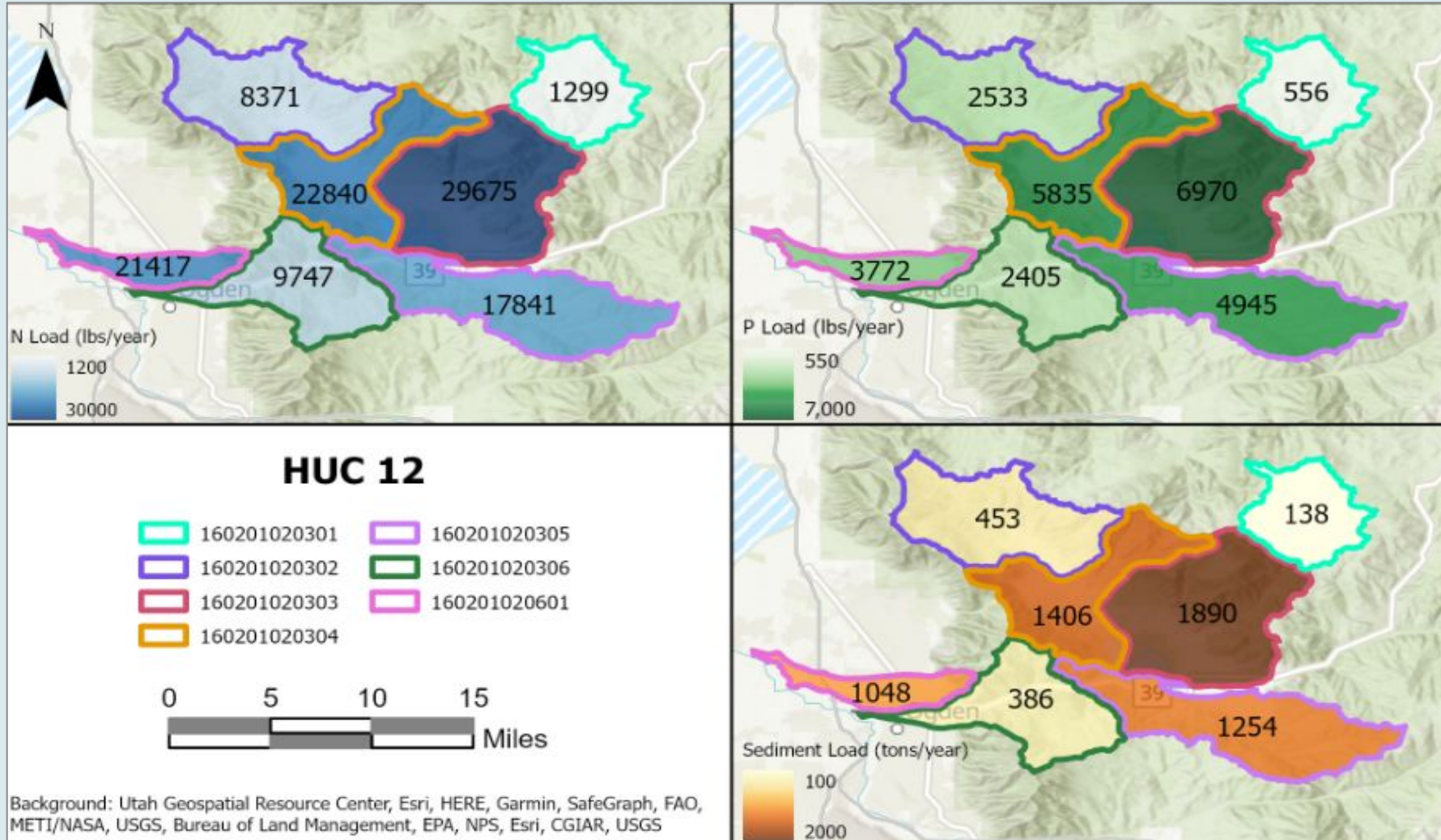


Community Goals: Improve water quality, protect groundwater and surface water, prioritize sustainability, and balance area development with watershed health.

Plan Findings

Pollutant Load

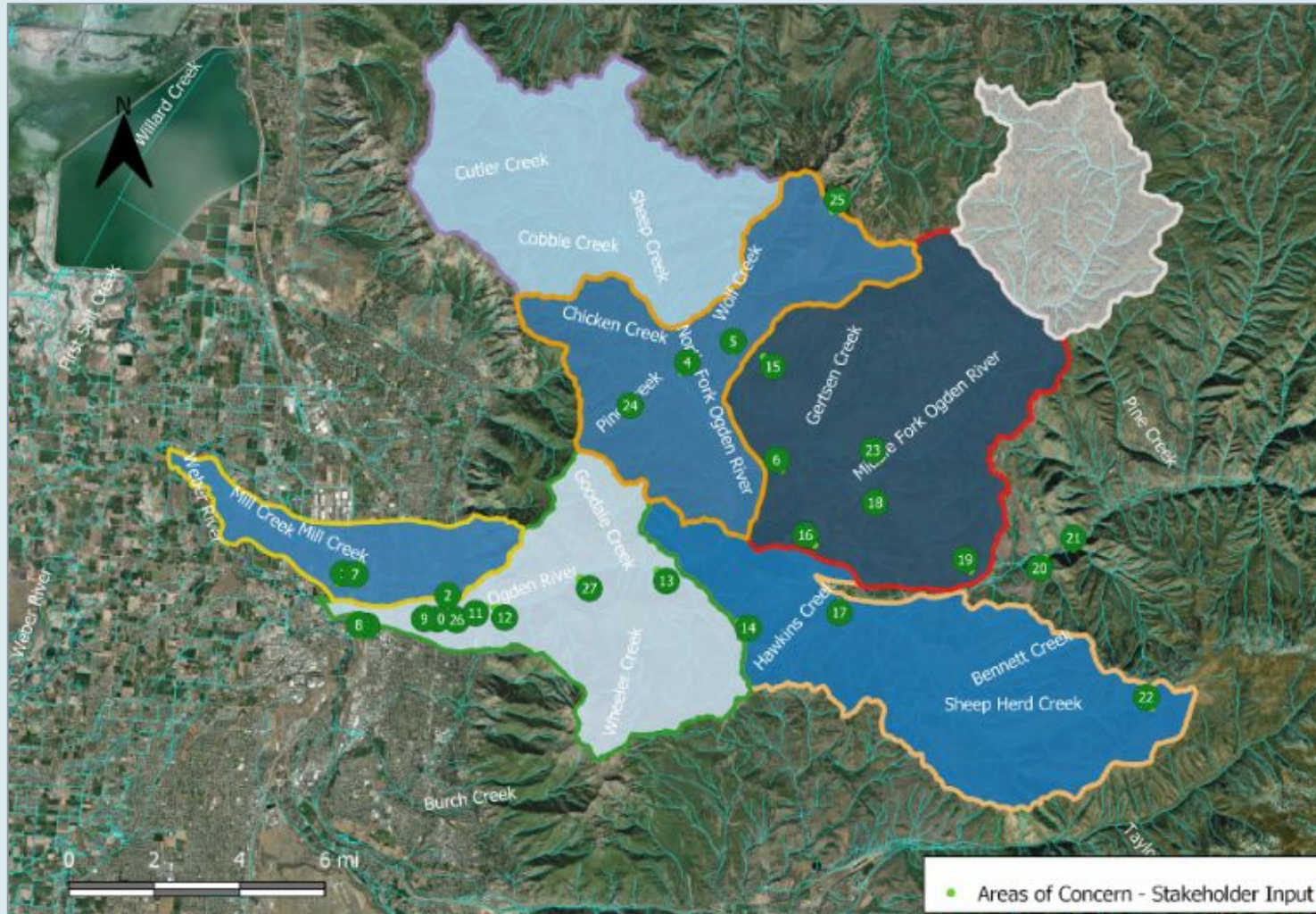
Sediment, nitrogen, phosphorus



Darker colors indicate higher pollutant loading

Areas of Concern

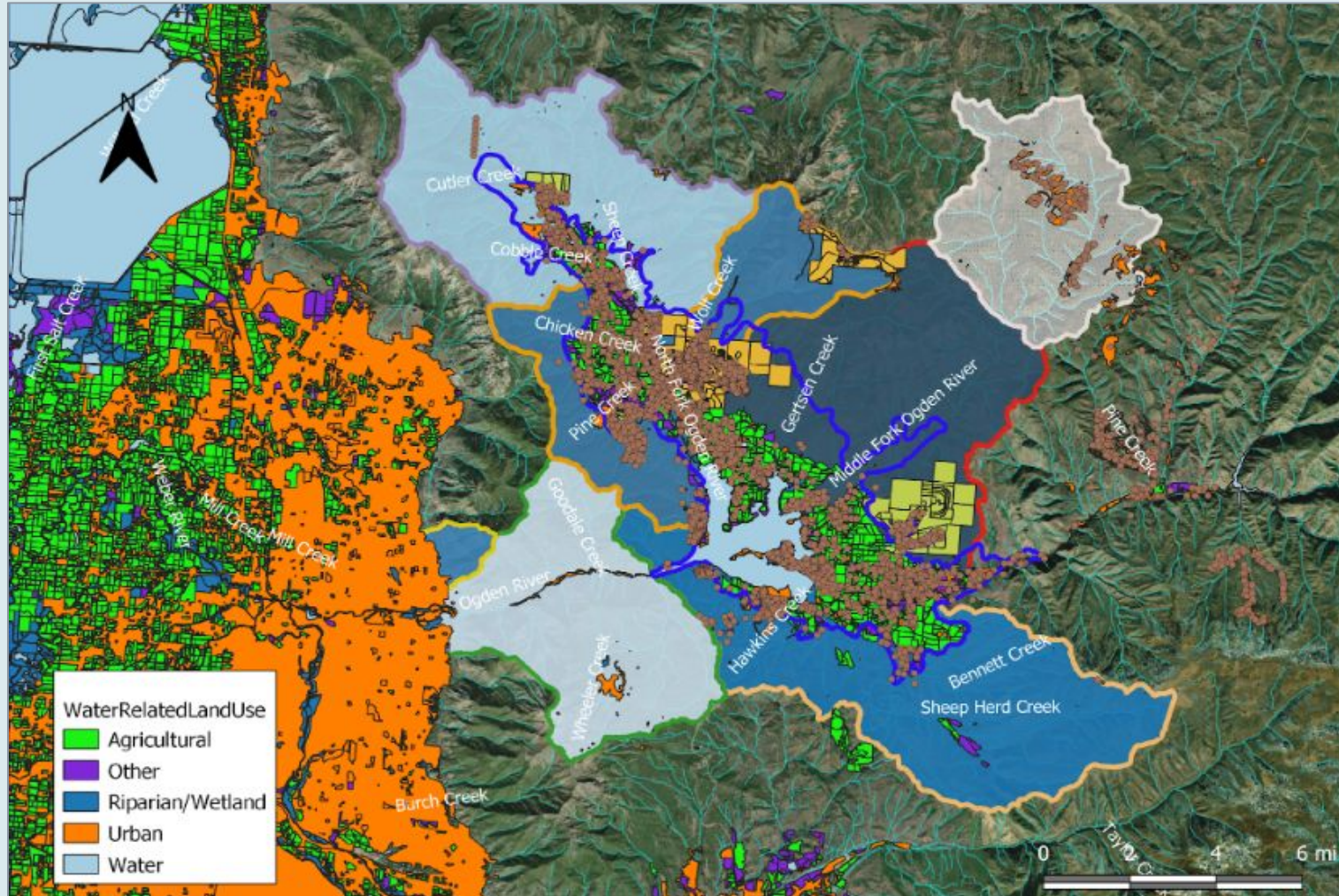
Stakeholder Input



Green circles show locations identified by stakeholders as areas of concern.

Septic Density

Developed Parcels

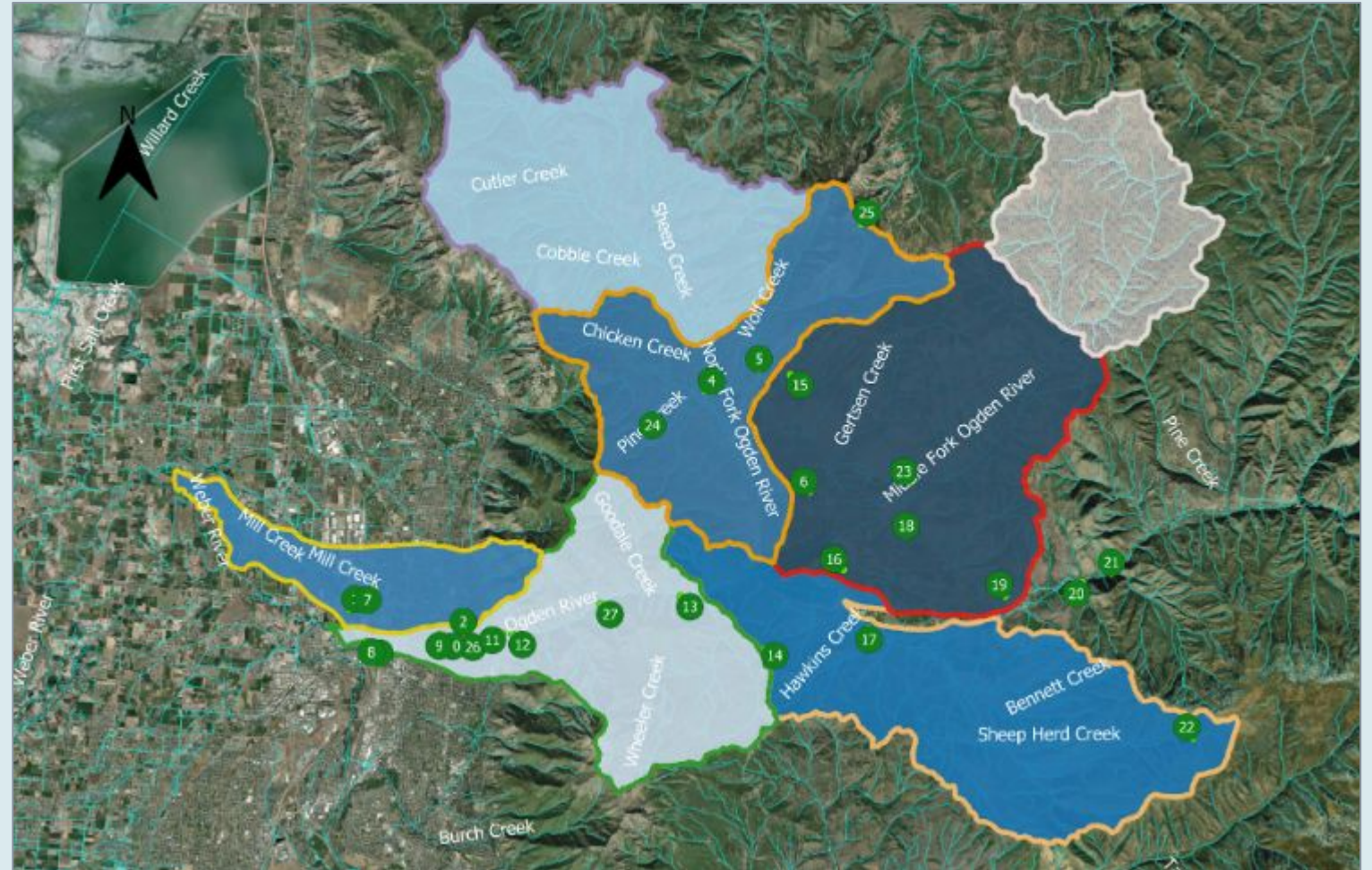


The brown areas identify residences with onsite septic. The purple line delineates the Ogden Valley groundwater aquifer.

Target Areas

Reductions Needed

1. Middle Fork Ogden River
2. North Fork Ogden River
3. South Fork Ogden River



Pollution Sources

Erosion and Sediment

—



Poor Construction Practices



Leaking Septic

—



Implementation Strategies

Construction

Best Management Practices



Ski Areas

Best Management Practices



Riparian Areas

Streambank Restoration



Stormwater

Management Strategies



High Point, **SEATTLE, WA**
Credit: Seattle Public Utilities

Onsite Septic

Inspections and Siting



Oregon State University Extension Service

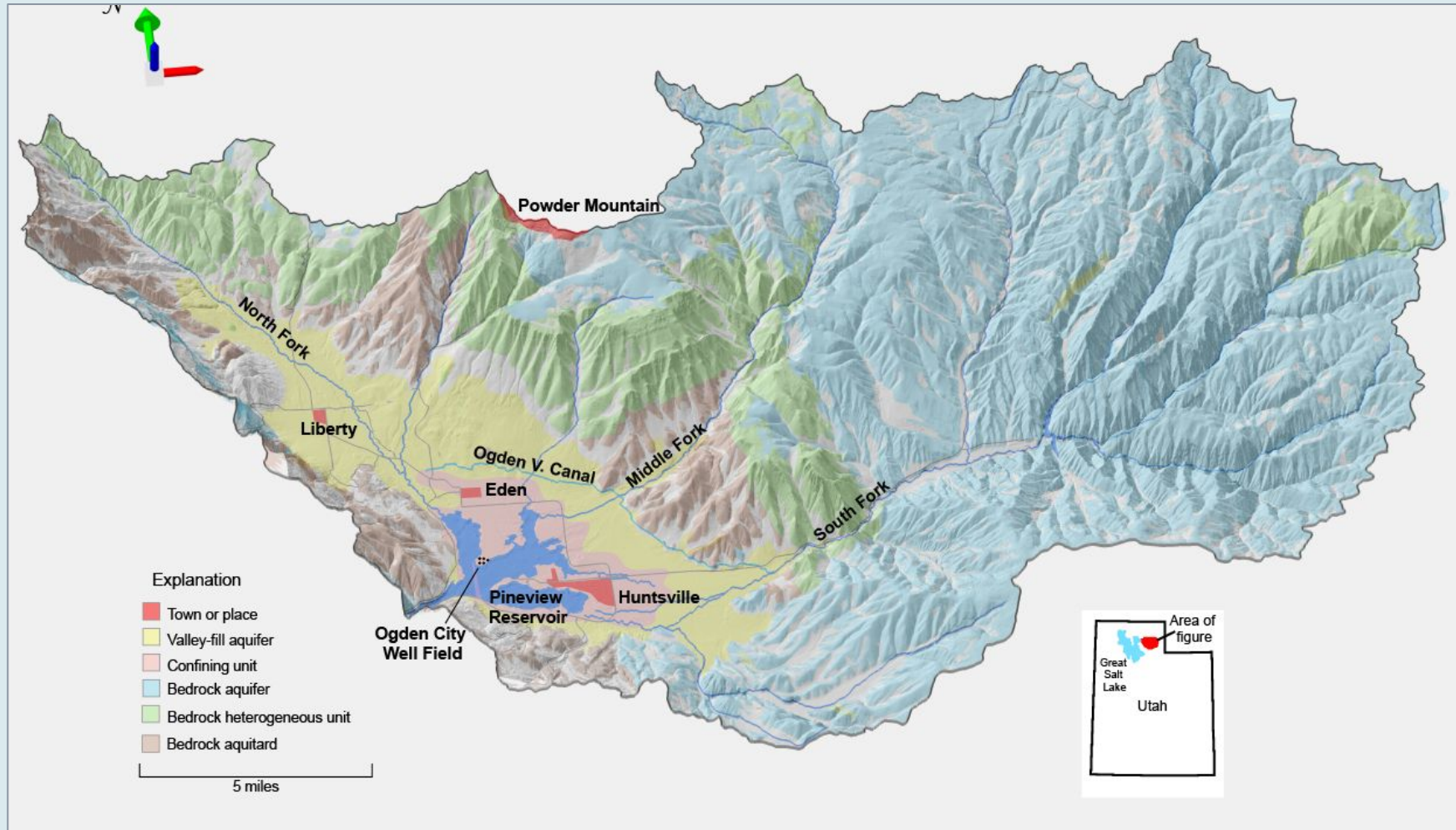
Community Engagement

Next Steps



Ogden Valley residents working together to educate others on pollution sources, best management practices, and sustainable growth

Future of the Watershed



Summary

The watershed plan identified three target areas for pollution reduction: the Middle, North, and South Fork Ogden Rivers.

Pollution sources include erosion and sediment, poor construction practices, and leaking septic systems.

Use of best management practices for residential construction, ski resorts, riparian areas, stormwater, and septic will help reduce pollution.

Stakeholder engagement, education, and outreach are critical steps for protecting water quality in Ogden Valley.

The Division of Water Quality and agency partners look forward to working with residents to improve valley water quality.

Questions?



Photo by Paul Inkenbrandt, Creative Commons